

# CURRICULUM BOOKLET 2024-25



*Care to Learn,  
Learn to Care*

**YEAR 9 THE TERM AHEAD**  
for students, parents and carers

# THE TERM AHEAD



*Students and staff always approach the summer term with a mix of emotions. Whilst some are excited to experience the enrichment opportunities on offer such as Duke of Edinburgh, First Aid Qualifications or our foreign visits others are feeling the pressure as they prepare themselves for the formal exam season. Our Year 11 and Year 13 students are working hard and show excellent commitment to their courses, there is no doubt they will gain the grades they deserve in the Summer.*

*Year 9 will complete the 'Step into the NHS' competition (our current Year 10 won the regional competition last year) which allows them to learn about the various careers within Health and Medicine. Year 10 will have the opportunity to complete their work experience which provides valuable life lessons alongside getting a real sense of the working world. Year 12 will start to look at possible Universities as well as complete some Fieldwork on their residential trips.*

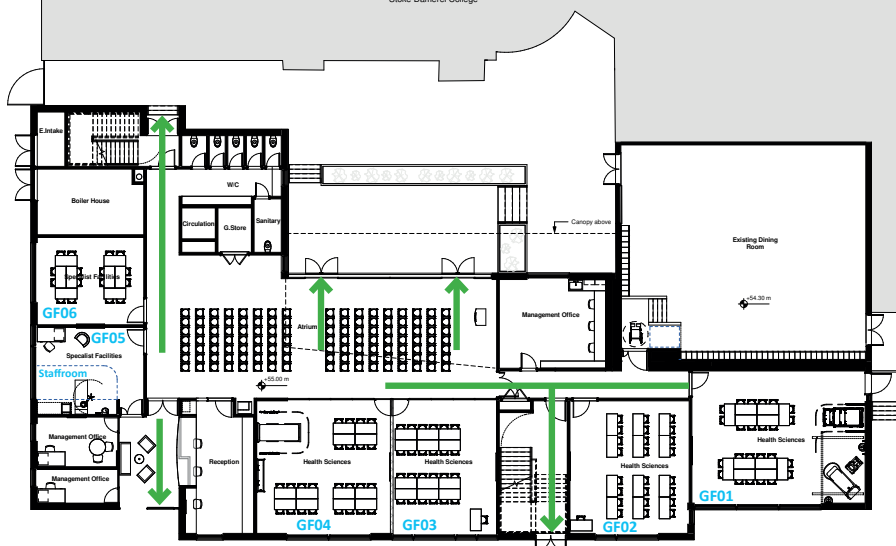
*Alongside this, learning in the classrooms continues with our mission to become World Class. Students will begin to use VR to explore inside the human body or even the Earth. It's certainly an exciting time to be in college.*

**Mrs Merricks**  
**Head of School**

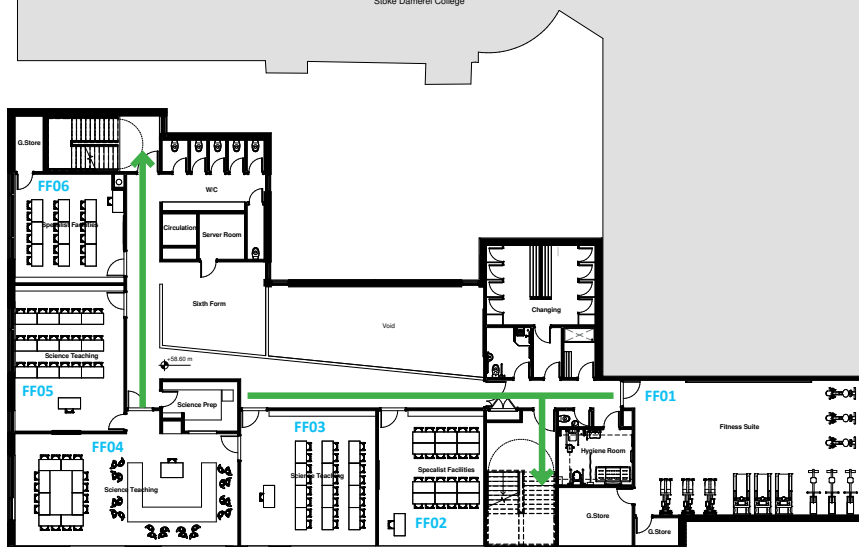
## KEY DATES

**Monday 30th June**  
**Non Pupil Day**  
**Wednesday 9th July**  
**Awards Evening**  
**Monday 14th July**  
**Curriculum Extension Week**

## Stoke Damerel College



## Stoke Damerel College



## Stoke Damerel College



**Tutor: to email, use staff initial and surname @sdcc-smhc.net for example  
mhussey@sdcc-smhc.net**

**Pastoral Practioner:**  
**Donna Morgan**

Tutor Group	Tutor	Room
9.1	Mr B Thomas	GF3
9.2	Mrs N Pugh	GF2
9.3	Mrs L Buckingham	GF4





# The Futures Curriculum

- The Futures Curriculum is preparing our students for their potential careers in the medical and health care industry.
- The students have an extra 20 minute session each morning with their tutor groups to learn to care and care to learn.
- With over 350 NHS careers we share these with the students and look into the skills needed for each career.
- The futures program also looks at medical ethics, the students can analyse current issues.
- Have a look at advancements in technologies and treatments.
- The students experience guest speakers who come and share their expertise and experiences of their careers.
- It is our aim for every student to have a first aid qualification.
- The Futures curriculum ensures that students have access to a balanced range of experiences to ensure they have academic success and a strong understanding of what their futures might be when they enter the world of work.

*Care to learn, Learn to care*



**GREENSHAW**  
LEARNING TRUST



**Scott**  
Scott Medical and Healthcare College

# **Tutor Time Reading Programme YEAR 9**

## **TITLE**

## **AUTHOR**

---

Clap When You Land	Elizabeth Acevedo
Everyday	David Levithan
Lord of the Flies	William Golding
Scythe	Neal Shusterman
Touching the Void	Joe Simpson
The Picture of Dorian Gray	Oscar Wilde
The Book Thief	Markus Zusak
Things a Bright Girl Can Do	Sally Nicholls

Students complete 15 minutes of reading each  
afternoon, giving them an experience of  
a wide range of texts

# CURRICULUM OVERVIEW

SMHC Year 9 Curriculum	TERM 3	
	HALF TERM 5	HALF TERM 6
Maths	Students apply algebraic skills developed earlier into finding perimeters, areas, lengths and volumes of complex and uncommon shapes. The also further develop the twin skills of algebra and geometry to solve specific angle problems involving 2D shapes.	Students are able to understand and apply the relationships between compound measures and how they relate to real life problems. This is coupled with a deeper understanding of transformations and how they can be combined.
English Language & Literature	<b>Unit 9: Rhetoric and Revolution</b> To explore how great orators can influence, shape and change our world through a number of influential speeches. Students will learn the art of rhetoric in preparation for their Spoken Language Assessment.	
Triple Science	<b>Biology:</b> Cell division, DNA & Protein Synthesis  <b>Chemistry:</b> Alkanes, Alkenes, Organic Compounds,  <b>Physics:</b> Waves & Properties, Reflection, Refraction & Sound, The Electromagnetic Spectrum,	<b>Biology:</b> Digestion and Enzymes  <b>Chemistry:</b> Polymers and Polymerisation  <b>Physics:</b> Reflection, Refraction & Sound, The Electromagnetic Spectrum,
French	<b>En bonne santé</b> Body parts, healthy living, food + drink, exercise	
Spanish	School and Study: Students begin to use opinions and reasons to discuss what they study. Students use the past present and future tenses to explore this topic which includes discussing school rules and school culture. Students build towards their speaking, listening, reading and writing exam within these topics.	Work and Future plans: Students deal with the future tense in much more detail and start to look towards future jobs, work experience and part time job opportunities. Students build towards their speaking, listening, reading and writing exam within these topics.

# CURRICULUM OVERVIEW

<b>Geography</b>	<p><b>Coastal processes and landforms</b> Coastal processes, erosional and depositional landforms. Students focus on key processes that create the shape and landforms found along the coastline. An understanding of the interactions between natural processes is developed. Students develop locational knowledge as they learn about the Dorset coastline, specifically Swanage and Studland.</p> <p>Flood management, hard and soft engineering. Students further consider the interactions between human and physical processes as the natural processes of coasts interact with the human process of urbanisation. Sustainable futures are considered in flood management and environmental design and cultural capital is built through the consideration of the real world flood management examples of Lyme Regis.</p>	<p><b>Fieldwork visit</b> In this unit, students experience a geographical enquiry process, considering; creating a hypothesis, data collection, data presentation, conclusions and evaluation. The investigation is based around the question 'Are the sea defences at Lyme Regis successful?', with sub questions;</p> <p>Is there evidence of longshore drift at Lyme Regis? Is there evidence of sea defences in action at Lyme Regis? What is the human response to the sea defences at Lyme Regis?</p>
<b>History</b>	<p>This looks at significant events and people which can be seen as a turning point in the 20th century. It aims to explore why these are seen as such significant events and looks at the perspective it is viewed from to question the stereotypical view.</p>	<p>Thus is a continuation of term 5</p>
<b>PE and Health</b>	<p><b>Fitness Training Principles</b> - Students further develop their knowledge of how to improve physical and skill related element of performance and how to track this.</p>	<p><b>Fitness testing</b> - The importance and impact that testing can have on performance and health is investigated, allowing students to monitor the impact of training.</p>
<b>PSE/RSE</b>	<p><b>Contraception and STIs:</b> What are STIs?, Treating STI's and GUM Clinic, Contraception Explored, Contraception - Condom</p>	<p><b>Combating Extremism and Terrorism:</b> Conspiracies Theories and Narratives, Forms of Extremism, What is Terrorism?, War and Conflict, The Radicalisation Process, Counter Terrorism</p>
<b>Health Sciences</b>	<p>In this term students will undertake a range of projects linked to either Health &amp; Social Care or Child Development.</p>	<p>In this term students will undertake a range of projects linked to either Health &amp; Social Care or Child Development. Students will also undertake assessment 2.</p>

# CURRICULUM OVERVIEW

## Psychology

**Social Influence** - Students will explore the themes of conformity, obedience and crowd behaviour when exploring this topic about how others could influence how an individual behaves.

**Review** - Within our final term, we will review the key areas covered and prepare students for the beginning of their GCSE course in Year 10. Students will examine a key study within Psychology and develop their understanding behind the aims, procedure, results, conclusions and evaluation therefore preparing them for the course ahead.



# HOME LEARNING - KS3

EVERY MOMENT  
MATTERS

WE ARE  
#TEAM SMHC

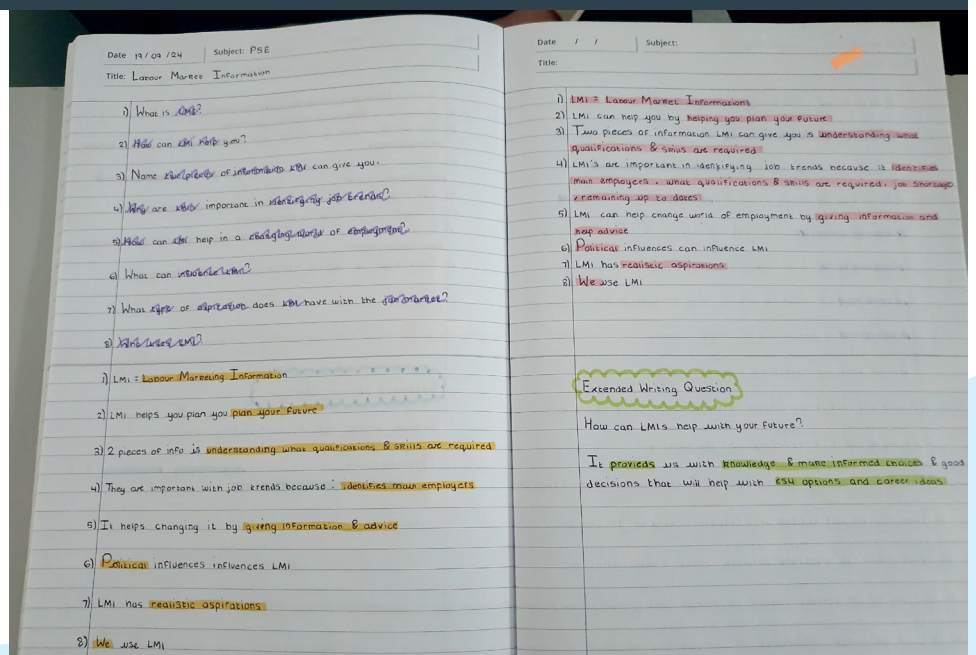
	Online HW	Written HW
Monday	Sparx Maths	Health Sciences
Tuesday	Sparx Science	Psychology
Wednesday	Sparx Reader	PSE
Thursday	Sparx Catch Up	Geography and French
Friday	Sparx Catch Up	History and Spanish

Support is available:

Students are supported with their written homework each morning during their tutor sessions, but additional support for homework can be found in GF4 either break.

Support for online Homework takes place each break-time in GF4, and after school for each of the Core subjects.

## KS3 HOMEWORK EXAMPLE



# CLUBS

## SUMMER 2025



**Scott**  
Scott Medical and Healthcare College

### EVERYDAY

#### MORNING FOOTBALL

*Who?* All years | *Where?* Astro  
*When?* Before School

#### BREAKFAST CLUB

*Who?* All years | *Where?* KS4 Canteen  
*When?* 7.45am

#### CAMPUS RADIO

*Who?* All years | *Where?* EB17  
*When?* Break A & B

#### SPARX SUPPORT

*Who?* Years 9-11 | *Where?* GF04  
*When?* Break A

#### SPARX SUPPORT

*Who?* Years 9-11 | *Where?* GF04  
*When?* Break B

### MONDAY & FRIDAY

#### GUITAR/DRUM LESSONS

*Who?* KS3/4/5 | *Where?* TBC  
*When?* ALL DAY

### TUESDAY, WEDNESDAY & THURSDAY

#### FITNESS SUITE

*Who?* Years 9 & 10 | *Where?* Fitness Suite  
*When?* 3.10-4pm

### THURSDAY

#### YEAR 9 & 10 FOOTBALL

*Who?* Years 9 & 10 | *Where?* 3G  
*When?* 3.10-4pm

#### ALL YEARS TENNIS

*Who?* All years | *Where?* Courts  
*When?* 3.10-4pm

#### STEAM

*Who?* All years | *Where?* CT1  
*When?* 3.10-4pm

#### CHILD DEVELOPMENT REVISION SUPPORT

*Who?* Years 10 & 11 | *Where?* GFO1  
*When?* Break B

#### KEYBOARD CLUB

*Who?* All years | *Where?* PA2  
*When?* 3-4pm

#### MEDICS AND DENTISTS

*Who?* Any Year 12 looking to apply to  
Medicine/Dentistry | *Where?* TBC  
*When?* 3.05-4pm

#### ACTING CLUB

*Who?* All years | *Where?* Theatre  
*When?* 3-4.30pm

#### KEYBOARD LESSONS

*Who?* KS3/4/5 | *Where?* TBC  
*When?* ALL DAY

#### BEATMAKERS

*Who?* All years | *Where?* PA4  
*When?* Break B

### MONDAY

#### SIGN LANGUAGE

*Who?* All years | *Where?* GF01  
*When?* Break A

#### ROCK CLUB - KS3

*Who?* KS3 | *Where?* PA2  
*When?* 3-4pm

### TUESDAY

#### ROUNDERS

*Who?* All years | *Where?* Astro  
*When?* 3.10-4pm

#### CRICKET

*Who?* All years | *Where?* Astro  
*When?* 3.10-4pm

#### POKEMON

*Who?* All years | *Where?* CT1  
*When?* Break B

#### ECO COUNCIL

*Who?* Years 7-13 | *Where?* EB15  
*When?* Break B

#### MODERN BRITAIN DEBATING CLUB

*Who?* Years 7-13 | *Where?* EB10  
*When?* 3.10-4pm

#### THE POWER OF US

*Who?* All years | *Where?* GF01  
*When?* Break B

#### TEXTILES: DIY FASHION

*Who?* All years | *Where?* VA2  
*When?* 3.10-4pm

#### STEAM

*Who?* All years | *Where?* CT1  
*When?* 3.10-4pm

### WEDNESDAY

#### ESPORTS

*Who?* All years | *Where?* CT3  
*When?* 3.10-4pm

#### NEEDLE POINT

*Who?* All years | *Where?* Ma9  
*When?* 3-4pm

#### PHOTOGRAPHY CLUB

*Who?* All years | *Where?* VA1  
*When?* 3.10-4pm

#### ART AND CLAY CLUB

*Who?* All years | *Where?* VA3  
*When?* 3.10-4pm

#### MUSICAL THEATRE CLUB

*Who?* All years | *Where?* Theatre  
*When?* 3-4.30pm

#### BRONZE DofE CLUB

*Who?* Year 9 - those that signed up  
to the award in September |  
*Where?* EB17 and EB18  
*When?* After school (Week B)

#### SILVER DofE CLUB

*Who?* Year 10 - those that signed up  
to the award in September |  
*Where?* EB17 and EB18  
*When?* After school (Week A)

### MONDAY, TUESDAY & FRIDAY

#### TABLE TENNIS

*Who?* All years | *Where?* FT1  
*When?* Break B

### FRIDAY

#### FURTHER MATHS

*Who?* Year 11 set 1s only | *Where?* FF05  
*When?* 3-4pm

#### BOOK CLUB

*Who?* KS4/5 | *Where?* GF02  
*When?* Break A

#### ROCK CLUB - KS4

*Who?* All years | *Where?* PA2  
*When?* 3-4pm

Care to Learn, Learn to Care

# Attendance Matters

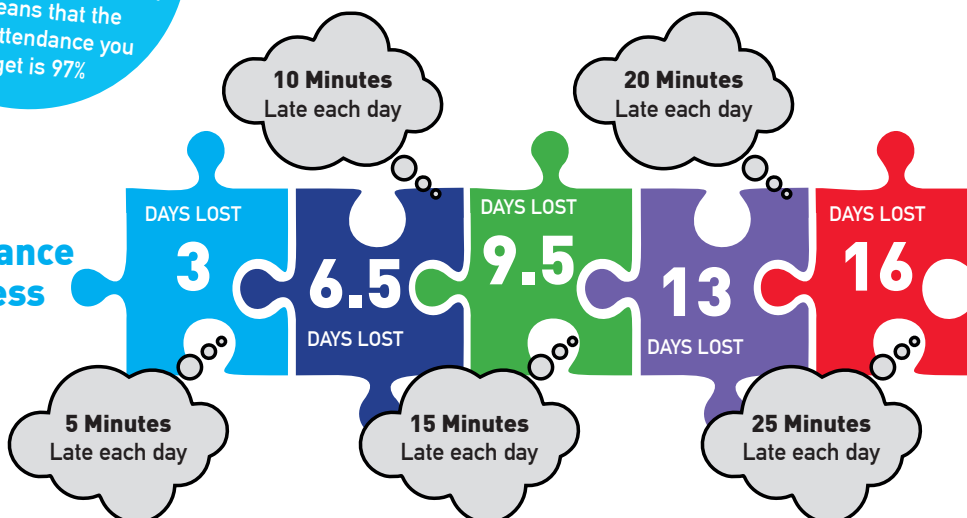
## #EVERYDAYCOUNTS

**Medical Appointments**  
When possible book them outside of school hours

**90% Attendance**  
or less can reduce your chances of good outcomes by half

**Family Holidays**  
You have 175 days a year where you are not in school. A one-week holiday in term time means that the highest attendance you can get is 97%

**Best chance of success**



Average learning hours per day is 5 hours.  
If you are 15 minutes late each day you will have missed 2 full weeks of school in 1 year!



**Serious impact on education**