

CURRICULUM BOOKLET 2024-25



*Care to Learn,
Learn to Care*

YEAR 10 THE TERM AHEAD
for students, parents and carers

THE TERM AHEAD



Students and staff always approach the summer term with a mix of emotions. Whilst some are excited to experience the enrichment opportunities on offer such as Duke of Edinburgh, First Aid Qualifications or our foreign visits others are feeling the pressure as they prepare themselves for the formal exam season. Our Year 11 and Year 13 students are working hard and show excellent commitment to their courses, there is no doubt they will gain the grades they deserve in the Summer.

Year 9 will complete the 'Step into the NHS' competition (our current Year 10 won the regional competition last year) which allows them to learn about the various careers within Health and Medicine. Year 10 will have the opportunity to complete their work experience which provides valuable life lessons alongside getting a real sense of the working world. Year 12 will start to look at possible Universities as well as complete some Fieldwork on their residential trips.

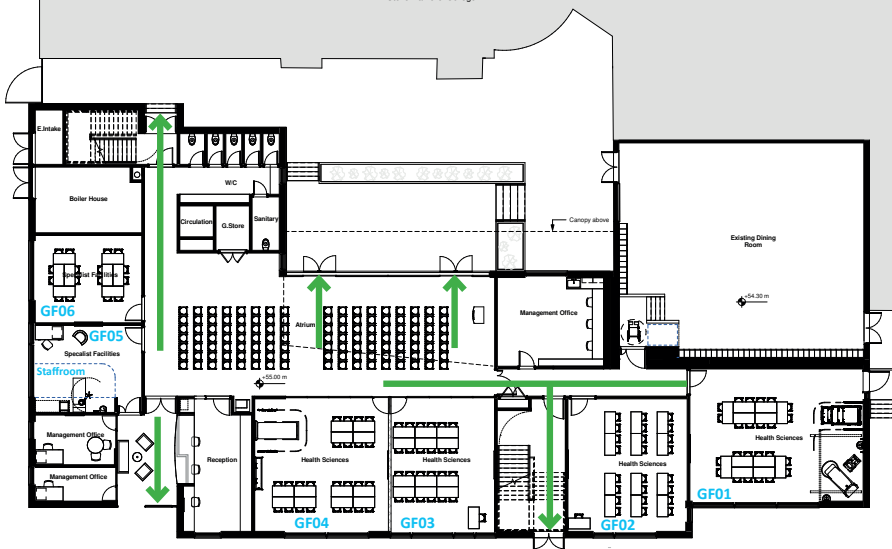
Alongside this, learning in the classrooms continues with our mission to become World Class. Students will begin to use VR to explore inside the human body or even the Earth. It's certainly an exciting time to be in college.

Mrs Merricks
Head of School

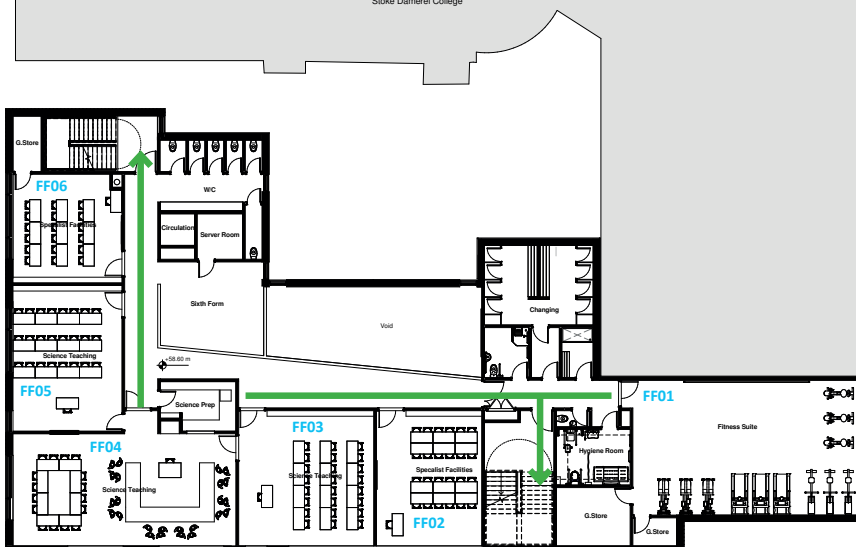
KEY DATES

Thursday 15th May
Year 10 Parents Evening
Monday 30th June
Non Pupil Day
Monday 23rd June -
Friday 4th July
Mocks
Wednesday 9th July
Awards Evening
Monday 14th July
Work Experience Week

Stoke Damerel College



Stoke Damerel College



Stoke Damerel College



**Tutor: to email, use staff initial
and surname @sdcc-smhc.net
for example
mhussey@sdcc-smhc.net**

Pastoral Practitioner:
Donna Morgan

Tutor Group	Tutor	Room
10.1	Miss F Haley	GF1
10.2	Mr T Longhurst	FF4
10.3	Mrs K Harvey	FF3



The Futures Curriculum

- The Futures Curriculum is preparing our students for their potential careers in the medical and health care industry.
- The students have an extra 20 minute session each morning with their tutor groups to learn to care and care to learn.
- With over 350 NHS careers we share these with the students and look into the skills needed for each career.
- The futures program also looks at medical ethics, the students can analyse current issues.
- Have a look at advancements in technologies and treatments.
- The students experience guest speakers who come and share their expertise and experiences of their careers.
- It is our aim for every student to have a first aid qualification.
- The Futures curriculum ensures that students have access to a balanced range of experiences to ensure they have academic success and a strong understanding of what their futures might be when they enter the world of work.

Care to learn, Learn to care



GREENSHAW
LEARNING TRUST



Scott
Scott Medical and Healthcare College

Tutor Time Reading Programme YEAR 10

TITLE

AUTHOR

Circe	Madeline Miller
Hamnet	Maggie O'Farrell
Flowers for Algernon	Daniel Keyes
I am Legend	Richard Matheson
The Help	Kathryn Stockett
Hidden Figures	Margot Lee Shetterly
The Strange Case of Dr Jekyll and Mr Hyde	Robert Louis Stevenson
Kite Runner	Khaled Hosseini

Students complete 15 minutes of reading each
afternoon, giving them an experience of
a wide range of texts

CURRICULUM OVERVIEW

SMHC Year 10 Curriculum	TERM 3	
	HALF TERM 5	HALF TERM 6
Maths	<p>Foundation: Students demonstrate fluency within Geometry by applying their learning to real life applications such as loci, constructions and plans and elevations</p> <p>Higher: Students develop complex algebraic skills through the development of Quadratics, whilst also apply their algebraic skills to numerical and geometrical problems with trigonometry and algebraic fractions</p>	<p>Foundation: Students are able to interpret and evaluate venn diagrams, frequency trees and probability trees</p> <p>Higher: Students are able to use Loci, Bearings and constructions with a range of real life and abstract problems</p>
English Language & Literature	<p>English Paper 1: Language analysis - students read a variety of fictional extracts in preparation for English Paper 1.</p> <p>English paper 2: Non- fiction texts in preparation for English Paper 2: 19th Century texts and 20th century texts. Themes such as penal systems, women in society, children in society, education, commerce, labour.</p>	<p>English Paper 1: Language analysis - students read a variety of fictional extracts in preparation for English Paper 1.</p> <p>English paper 2: Non- fiction texts in preparation for English Paper 2: 19th Century texts and 20th century texts. Themes such as penal systems, women in society, children in society, education, commerce, labour.</p>
Triple Science	<p>Biology: Hormones in Reproduction, Contraception & IVF, Ecosystems</p> <p>Chemistry: Rate of reaction, Reversible Reactions, Required Practical Revision</p> <p>Physics: Pressure in fluids. Review of forces and motion.</p>	<p>Biology: Mock examination revision and exams</p> <p>Chemistry: Mock examination revision and exams</p> <p>Physics: Mock examination revision and exams</p>
French	<p>Talking about my school and plans for the future. Students begin to use opinions and reasons to discuss what they study. Students use the past present and future tenses to explore this topic which includes discussing school rules and school culture. Students build towards their speaking, listening, reading and writing exam within these topics.</p>	

CURRICULUM OVERVIEW

Spanish	Where I live: Students will describe their local area and the regions around them. They will also compare their own region with other areas of the world. Students will be able to use a range of complex opinions and reasons to describe the world around them.	
Geography	Weather Hazards and Climate Change Global atmospheric circulation, formation of tropical storms, effects and responses of tropical storms, specific examples of global and UK weather hazards, causes mitigation and adaptation to climate change. Students learn about global atmospheric processes and how these processes interact with the human world. Cultural capital is developed through empathic consideration of effects and responses to natural disasters.	Revision and Mock Exams During HT6, students will complete a mock exam. The exam will be Paper 1 of the GCSE.
History	Medicine through time - Paper 1. Students will study the development of medicine looking at causes, treatment and how the sick were looked after. They will focus on the extended writing skills.	Students will continue the study of medicine from 1250 to 2000 but will also recap on Western Front and the impact of WW1 on developments in treatments and surgery. The skill of usefulness will also be taught in this unit
PE and Health	Controlled Assessment One / Demonstrate ways to participate in sport and understand the roles and responsibilities of officials	Demonstrate ways to participate in sport and understand the roles and responsibilities of officials / Explore how different components of fitness are used in different physical activities
PSE/RSE	Exploring World Issues: International Organisations, Peace, War and Conflict, Human Rights During War, Aid and Supporting Countries	Exploring British Values: What are Human Rights?, Democracy Explored, Exploring British Values, Mutual Respect and Tolerance, Individual Liberty, Hate Crime in the UK
Child Development	In this term students will be taken through examples of the tasks they will complete in the PSA. Students will be given the opportunity to practice these tasks in preparation for the real thing in year 11. Students will also start learning content for component 3 which is the exam unit.	In this term students will be taken through examples of the tasks they will complete in the PSA. Students will be given the opportunity to practice these tasks in preparation for the real thing in year 11. Students will also start learning content for component 3 which is the exam unit.

CURRICULUM OVERVIEW

Health Sciences	<p>In this term students will continue learning about different obstacles and complete PSA practice tasks to help prepare them for year 11. They will also start learning content for Component 3 which is the exam unit. They will start exploring different factors that can impact on someone's health and wellbeing.</p>	<p>Students will continue to learn about factors for component 3. They will start preparation for a Mock PSA and complete this Mock.</p>
Psychology	<p>Memory continued - Students will develop their knowledge by examining different issues and debates within the topic of memory.</p>	<p>Development - in this half term, students will explore how a person develops from birth in terms of behaviour and the explanations given within relevant research and studies.</p>

HOME LEARNING - KS4

EVERY MOMENT
MATTERS

WE ARE
#TEAM SMHC

Year 10 Homework Timetable

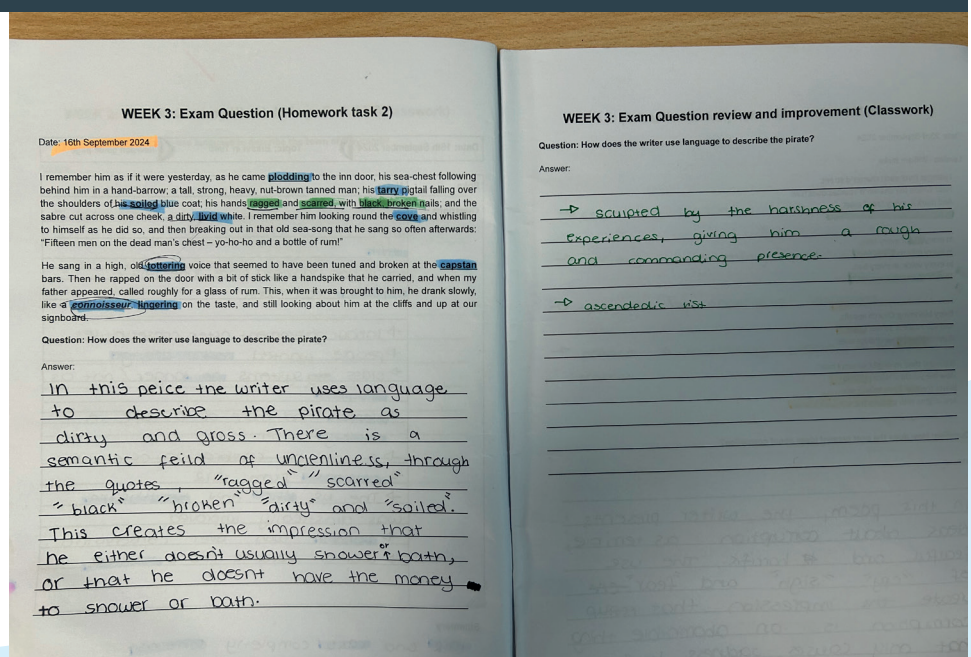
Monday	English Task 1	Option A Task 1	Option C Task 1
Tuesday	Option B Task 1	Sparx Maths	Science Task 1
Wednesday	Sparx Maths	Option C Task 2	Sparx Science
Thursday	Option A Task 2	Sparx Science	Option B Task 2
Friday	Science Task 2	Science Task 2	

Support is available:

Students are supported with their written homework each morning during their tutor sessions, but additional support for homework can be found in GF4 either break.

Support for online Homework takes place each break-time in GF4, and after school for each of the Core subjects.

KS4 HOMEWORK EXAMPLE



CLUBS

SUMMER 2025



Scott
Scott Medical and Healthcare College

EVERYDAY

MORNING FOOTBALL

Who? All years | *Where?* Astro
When? Before School

BREAKFAST CLUB

Who? All years | *Where?* KS4 Canteen
When? 7.45am

CAMPUS RADIO

Who? All years | *Where?* EB17
When? Break A & B

SPARX SUPPORT

Who? Years 9-11 | *Where?* GF04
When? Break A

SPARX SUPPORT

Who? Years 9-11 | *Where?* GF04
When? Break B

MONDAY & FRIDAY

GUITAR/DRUM LESSONS

Who? KS3/4/5 | *Where?* TBC
When? ALL DAY

TUESDAY, WEDNESDAY & THURSDAY

FITNESS SUITE

Who? Years 9 & 10 | *Where?* Fitness Suite
When? 3.10-4pm

THURSDAY

YEAR 9 & 10 FOOTBALL

Who? Years 9 & 10 | *Where?* 3G
When? 3.10-4pm

ALL YEARS TENNIS

Who? All years | *Where?* Courts
When? 3.10-4pm

STEAM

Who? All years | *Where?* CT1
When? 3.10-4pm

CHILD DEVELOPMENT REVISION SUPPORT

Who? Years 10 & 11 | *Where?* GFO1
When? Break B

KEYBOARD CLUB

Who? All years | *Where?* PA2
When? 3-4pm

MEDICS AND DENTISTS

Who? Any Year 12 looking to apply to
Medicine/Dentistry | *Where?* TBC
When? 3.05-4pm

ACTING CLUB

Who? All years | *Where?* Theatre
When? 3-4.30pm

KEYBOARD LESSONS

Who? KS3/4/5 | *Where?* TBC
When? ALL DAY

BEATMAKERS

Who? All years | *Where?* PA4
When? Break B

MONDAY

SIGN LANGUAGE

Who? All years | *Where?* GF01
When? Break A

ROCK CLUB - KS3

Who? KS3 | *Where?* PA2
When? 3-4pm

TUESDAY

ROUNDERS

Who? All years | *Where?* Astro
When? 3.10-4pm

CRICKET

Who? All years | *Where?* Astro
When? 3.10-4pm

POKEMON

Who? All years | *Where?* CT1
When? Break B

ECO COUNCIL

Who? Years 7-13 | *Where?* EB15
When? Break B

MODERN BRITAIN DEBATING CLUB

Who? Years 7-13 | *Where?* EB10
When? 3.10-4pm

THE POWER OF US

Who? All years | *Where?* GF01
When? Break B

TEXTILES: DIY FASHION

Who? All years | *Where?* VA2
When? 3.10-4pm

STEAM

Who? All years | *Where?* CT1
When? 3.10-4pm

WEDNESDAY

ESPORTS

Who? All years | *Where?* CT3
When? 3.10-4pm

NEEDLE POINT

Who? All years | *Where?* Ma9
When? 3-4pm

PHOTOGRAPHY CLUB

Who? All years | *Where?* VA1
When? 3.10-4pm

ART AND CLAY CLUB

Who? All years | *Where?* VA3
When? 3.10-4pm

MUSICAL THEATRE CLUB

Who? All years | *Where?* Theatre
When? 3-4.30pm

BRONZE DofE CLUB

Who? Year 9 - those that signed up
to the award in September |
Where? EB17 and EB18
When? After school (Week B)

SILVER DofE CLUB

Who? Year 10 - those that signed up
to the award in September |
Where? EB17 and EB18
When? After school (Week A)

MONDAY, TUESDAY & FRIDAY

TABLE TENNIS

Who? All years | *Where?* FT1
When? Break B

FRIDAY

FURTHER MATHS

Who? Year 11 set 1s only | *Where?* FF05
When? 3-4pm

BOOK CLUB

Who? KS4/5 | *Where?* GF02
When? Break A

ROCK CLUB - KS4

Who? All years | *Where?* PA2
When? 3-4pm

Care to Learn, Learn to Care

Attendance Matters

#EVERYDAYCOUNTS

Medical Appointments
When possible book them outside of school hours

90% Attendance
or less can reduce your chances of good outcomes by half

Family Holidays
You have 175 days a year where you are not in school. A one-week holiday in term time means that the highest attendance you can get is 97%

35 missed Lessons

ALMOST THERE

96% Attendance
Equates to 7 school days off each year

80 missed Lessons

DANGER ZONE

92% Attendance
Equates to 16 school days off each year

100%

PERFECTION

100% Attendance

55 missed Lessons

94%

NEEDS TO IMPROVE

94% Attendance
Equates to 11 school days off each year

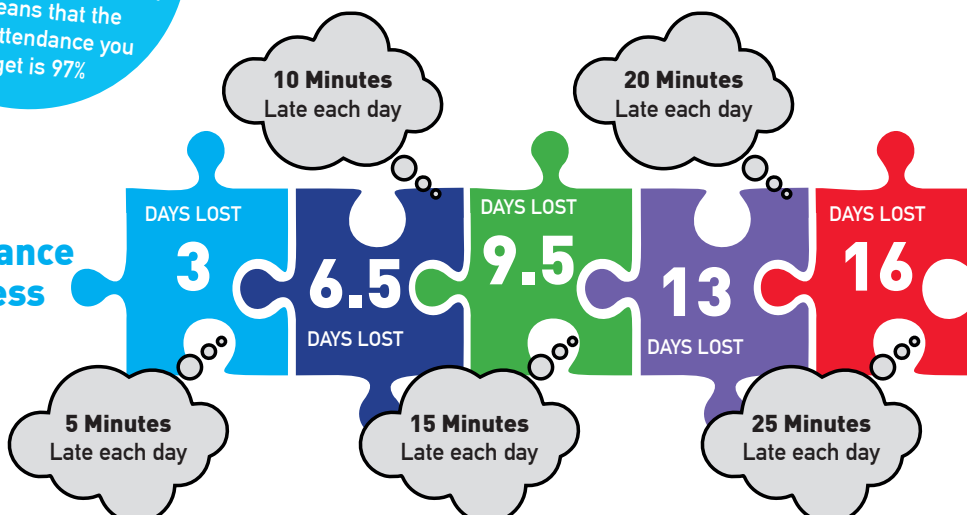
100 missed Lessons

90%

EXTREME IMPACT!

90% Attendance
Equates to 1 month off each year

Best chance of success



Serious impact on education

Average learning hours per day is 5 hours.
If you are 15 minutes late each day you will have missed 2 full weeks of school in 1 year!